

CERTIFIED LAND CORNER RECORDATION

DESCRIPTION OF CORNER EVIDENCE FOUND, AND ORIGINAL RECORD (if known)

LOCATION Found 5/8" Iron Pipe 18" below road surface at centerline intersection
Four Mile Road and Red Fox Drive.

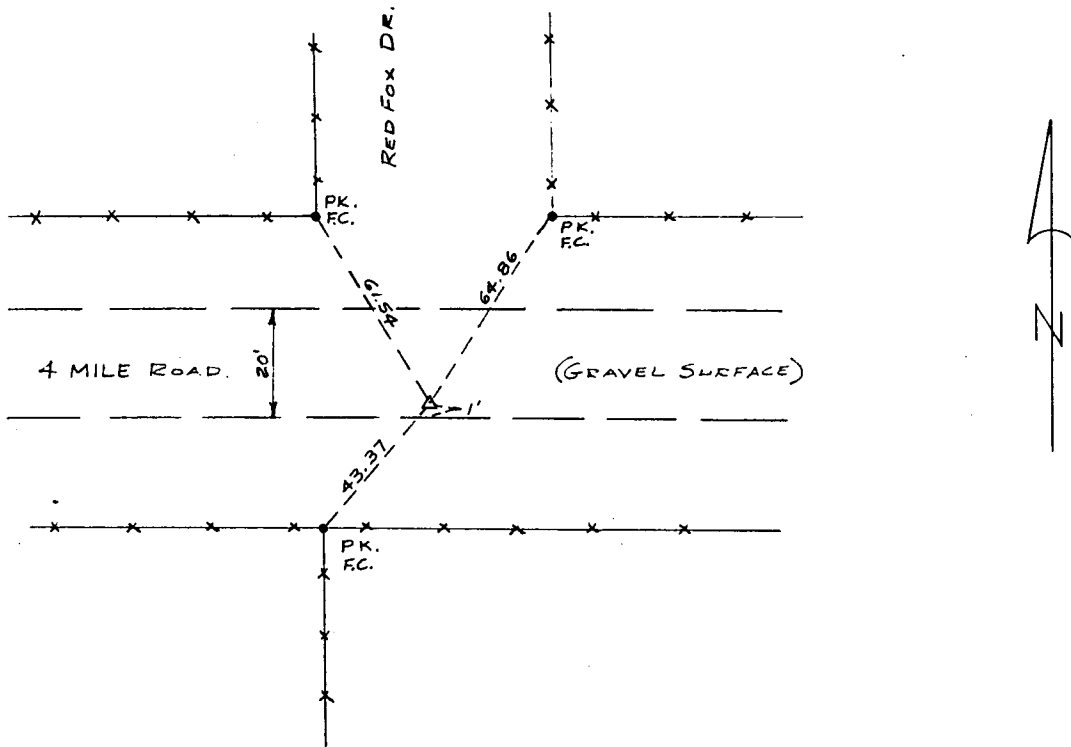
1/4
S.9 S.16

T.14N., R.66W.

DESCRIPTION OF MONUMENT AND ACCESSORIES ESTABLISHED
TO PERPETUATE THE ORIGINAL LOCATION OF THIS CORNER:

See ties below.

SKETCH, WITH COURSE AND DISTANCE TO ADJACENT CORNER IF DETERMINED IN THIS SURVEY.
(May Sketch or Paste Reproduction on Reverse Side.)



I, JOHN A. STEIL certify that I have carefully performed or reviewed the work done on the diagrammed corner as reported on this recordation form and approve the same.

John A. Steil
Signature of Surveyor

2500
Registration No.

STATE OF WYOMING,
Office of Clerk and Recorder,
County of Saramie

568916

This "corner record" was filed for record on the FEB 15 1980 day of 19, was noted on the cross-index plat and is assigned page No. , in book No.

Yvonne C. Whitehead
County Official

Cross Index No. <u>J</u>	T. <u> </u>	R. <u> </u>	Mer. <u> </u>
	T. <u>11</u>	R. <u> </u>	Mer. <u> </u>
	T. <u> </u>	R. <u> </u>	Mer. <u> </u>
	T. <u> </u>	R. <u> </u>	Mer. <u> </u>
	T. <u> </u>	R. <u> </u>	Mer. <u> </u>
	T. <u> </u>	R. <u> </u>	Mer. <u> </u>
	T. <u> </u>	R. <u> </u>	Mer. <u> </u>

J-11 14-66